

Abbey College Manchester
5-7 Cheapside,
Off King Street,
Manchester, M2 4WG
T: +44 (0)161 817 2700
E: admin@abbeymanchester.co.uk
www.abbeymanchester.co.uk

ABBEY
COLLEGE
MANCHESTER

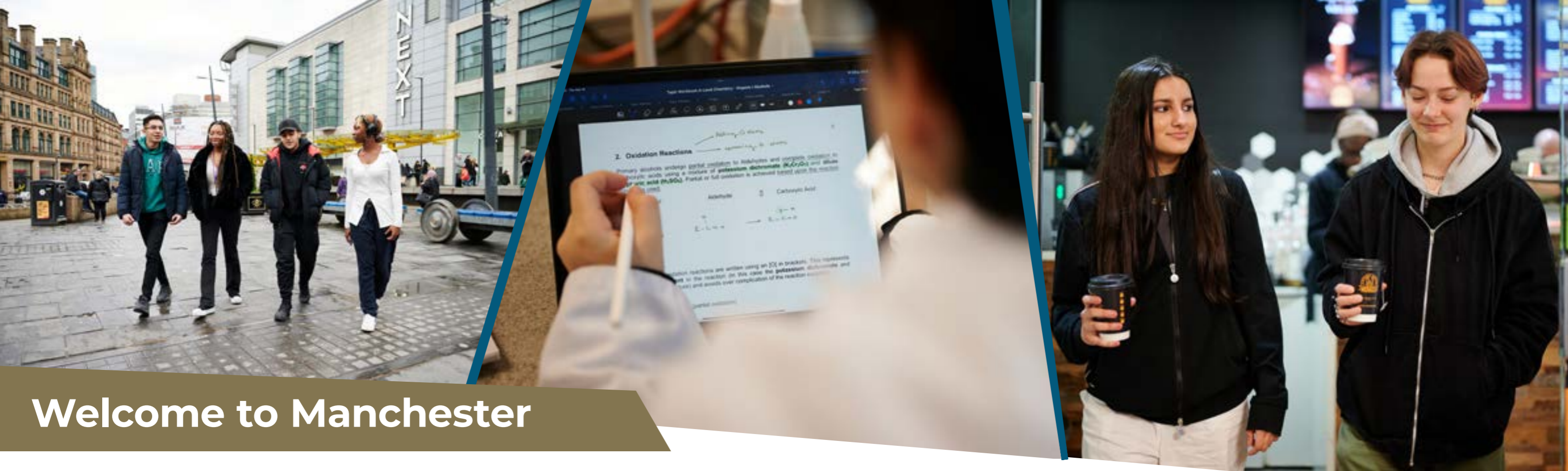


ABBEY DLD
GROUP OF COLLEGES

Abbey College Manchester is part of the Abbey DLD Group of Colleges

ABBEY COLLEGE MANCHESTER ACCOMMODATION GUIDE

2025/2026



Welcome to Manchester

Living away from home for the first time at such a young age whilst very exciting can be a little daunting..

At Abbey College Manchester you will be part of our supportive community and we understand the importance of finding the right accommodation for you. Our accommodation choices allow our students to select the level of support that is right for them. All students will have their accommodation choice confirmed before they arrive in the UK and we will assist with transfers from Manchester airport. Once you have arrived in Manchester you will receive an induction to living in the UK and the college to ensure your first few days are as simple and stress-free as possible.

The College works with students and their families both to select the right accommodation for them and, once the student has arrived, to offer support and guidance throughout their time in the UK. We believe that a student's home life is an important part of their experience of studying abroad and that the accommodation must allow the student to live and study effectively.

Whilst providing an appropriate degree of independence, the primary aim of our accommodation team is to ensure all students are happy and that all their welfare, health and safety needs are met. Great care is taken to help students adjust to being away from homes for what may be the first time. The ethos of mutual respect is maintained within the boarding environment between staff and students.

Marc Cronin
Assistant Principal - Boarding and Pastoral



All of our accommodation choices offer, modern, clean and safe accommodation, and they all share the following features.

- Wi-Fi
- Weekly bathroom clean
- Bed linen and towels
- Full board meal plans
- On-site laundry facilities
- Weekend and evening activities
- Student's health needs supported by our college nurse, with all students registered with the local GP
- Dedicated male and female floors/blocks in our boarding house

The Accommodation choices for our students depend on their age:

Students aged 16 or above at the start of the academic year have the choice to either stay with a host family or in the Boarding House – Clydesdale House.

Students under 16 at the start of the academic year must stay with a host family unless they live with a parent or other blood relative (i.e. aunt or uncle; grandparents or a brother or sister over the age of 25).



BOARDING AT ABBHEY COLLEGE MANCHESTER

Clydesdale House

Clydesdale House is our boarding house located in central Manchester, offering high-quality, safe accommodation within a 10 minute walk of the college

The building has 24 hour Security, along with a secure door entry system and CCTV cameras. There is also secure cycle storage, laundry facilities, onsite maintenance team, and weekly cleaning of kitchens.

Abbey College Manchester has 72 single study en-suite bedrooms in separate clusters for males and females spread over the four floors of Clydesdale House.

Boarding accommodation for students aged 16 years and over on 1st September 2025

All rooms are en-suite with newly fitted modern bathrooms. Each cluster (approx 10 rooms) has a large kitchen equipped with hobs and ovens and plenty of fridge and freezer space. There is a large communal lounge in each cluster with a 50 inch television, a corner sofa and a table for socialising, study and activities.

Leaving the boarding house and curfews

Students may leave Clydesdale House in the evenings to experience what Manchester as a city offers. They can also apply for a day pass for going out at weekends, which can be used for shopping, entertainment, playing sports or attending events.

However, the security, safety and welfare of the students is our priority. In light of this there are curfews in place and students must be contactable at all times whilst they are off the premises



ROOM TYPES

There are three types of room students can choose from at Clydesdale House:

Standard En-Suite

This is a good size offering all the necessary amenities. These include a small double size bed, wardrobe, cupboards, desk, chair and lamp, and a private bathroom with a shower, toilet and sink.

Deluxe En-Suite

This room has all the features of the standard room but is a little larger *

Premium En-Suite

These are large rooms and have a separate study area with an armchair and table *.

* Please note that these rooms are limited and are offered on a first come first served basis. In light of the configuration of the building these rooms do vary in size.



Standard En-Suite Room



Deluxe En-Suite Room



Premium En-Suite

MONDAY	Jollof Rice	Fried Plantain	Coleslaw
TUESDAY	Asian Halal Chicken Stir Fry	Noodles	Salad Bar and Vegetables
WEDNESDAY	Mexican Beef Tacos	Salad Bar	Various Dips
THURSDAY	Italian Beef Meatballs served with Spaghetti	Garlic Bread	Salad Bar
FRIDAY	Thai Red Curry with Halal Chicken	Noodles	Vegetables
SATURDAY	Homemade BBQ Chicken Pizzas	Potato Wedges	Salad Bar and Vegetables
SUNDAY	Roast Chicken Dinner with all the trimmings.	Yorkshire Puddings, Gravy, Roast Potato & Vegetables	

Vegetarian Options are Always Available

Example of a weekly evening meal plan. Menus rotate on a three week basis.

Items included in the boarding fees

- A standard, deluxe or premium en-suite room for the full academic year (Please note the boarding House will be closed at Christmas and during the summer)
- Three meals per day; Breakfast, packed lunch and dinner, prepared by our in-house cook
- Large shared kitchen, fully equipped with a wide range of appliances such as ovens, toasters, kettles, fridges/freezers etc.
- Large shared living area, with sofa, dining table and 50 inch television
- Good Wi-Fi connection
- Weekly bathroom clean
- Bed linen & towels
- Experienced full-time Houseparents on-site at all times
- All laundry
- Indoor bike storage
- Activities programme arranged by Houseparents. (Please note some external trips will have an extra charge.)



Scan/click the QR Code for a virtual tour of boarding at Clydesdale House



Host Family Accommodation

Our Host Families

Our Host Families are carefully selected to ensure a friendly, safe, secure environment in which students can study, relax and integrate into the family. All our families are checked by the UK government Disclosure and Barring Scheme (DBS) and are also visited at home, and invited into the college for an interview, before we confirm them as a Host Family. Our families reflect the mix of cultures and people who live in Manchester - and can range from families with young children, to people whose own children have grown up and moved out, through to retired couples. Some have pets, usually cats or dogs, but students will always be asked if they are happy living with pets.

Students are encouraged to spend time with their Host Family in the evenings and weekends, as this gives them the best chance to build good relationships and to experience British culture and lifestyle.

Facilities

Each student will have their own bedroom with a desk, chair and storage for their clothes (wardrobe and/or chest of drawers).

Bathroom facilities are usually shared with the family. However, in some cases the house will have two bathrooms in which case the student will have a bathroom for their exclusive use.

All homes have internet access and have a television in the living room.

Meals

Accommodation is offered on a full board basis 7 days a week, which includes breakfast, packed lunch, and an evening meal each day.

Students are encouraged to eat with the host family as this is an important aspect of socialising and an ideal opportunity to practise their English.

Meals will be very different to a student's normal expectations, but this is part of adapting to British life. Host families will cater for special diets if requested.



BOARDING FEES

All fees shown below are per year:

Type of Room	Net Fees	VAT (20%)	Total
Clydesdale House, Standard En-suite	£16,300	£3,260	£19,560
Clydesdale House, Deluxe En-suite	£17,400	£3,480	£20,880
Clydesdale House, Premium En-suite	£19,300	£3,860	£23,160
Host Family	£13,700	£2,740	£16,440

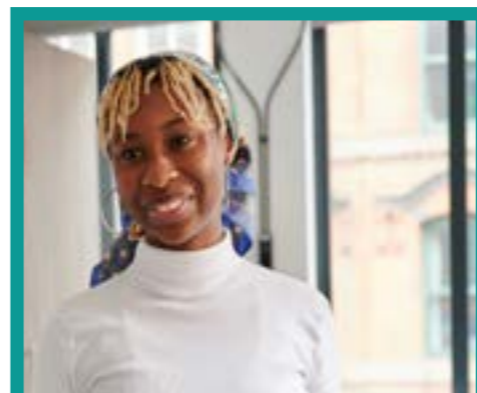
Note: - In line with the UK Government announcement, from 1st January 2025, all independent education tuition and boarding fees in the UK will be subject to VAT of 20%.

The accommodation is open from 30th August 2025 and closes at the end of the academic year on 27th June 2026. Students must vacate their rooms for the three Christmas holiday and during the summer break. But boarding accommodation remains open during the Easter holiday and all half term breaks.

Any questions?

Our Assistant Principal and Director of College Operations, Iain Stewart, will be happy to answer any more questions you may have. He can be contacted via email at iain.stewart@abbeymanchester.co.uk or by telephone on +44(0)161 817 2700.

www.abbeymanchester.co.uk



"I REALLY **ENJOYED MEETING** NEW PEOPLE FROM DIFFERENT COUNTRIES AND THROUGH THIS I LEARNED ABOUT **NEW CULTURES** AND TRIED NEW FOOD. IT WAS **GREAT LIVING** WITH MY **FRIENDS** AT CLYDESDALE HOUSE."

NATASHA, NIGERIA



"I HAVE FOUND **MANCHESTER** TO BE THE PERFECT PLACE FOR STUDENTS AS YOU CAN HAVE **A LOT OF FUN**, DESPITE THE CITY NOT BEING THAT BIG. I LIVED WITH A **HOST FAMILY** AND THEY MADE SURE THAT I ALWAYS FELT **COMFORTABLE** AND WERE VERY **SUPPORTIVE.**"

SAIDKHON, AZERBAIJAN

www.abbeymanchester.co.uk